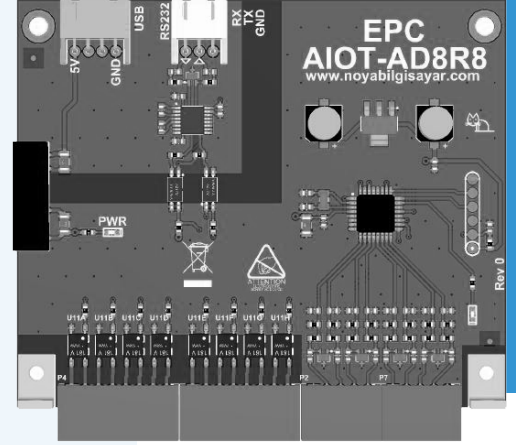


# E-LIFE EPC AIOT-AD8R8

## I/O Module

### GENERAL INFORMATION

- 32-bit Low Power Cortex-M0 Processor
- 8 Solid State Relay Type Digital Outputs
- 8 Digital/Analog Inputs
- 1.5KV Isolation on Digital Outputs
- Plug-in and Compression Type Terminals for Connections
- RS232 Communication Port
- 5V DC USB Power Input
- Integrated in E-Life EPC Series Panel PC



e-life  
solutions

### Technical Specifications

<b>Model</b> AIOT-AD8R8	<b>Processor</b> ARM Cortex-M0	<b>Interface</b> RS232
<b>Power</b> 5V DC, USB	<b>Digital Output</b> 8 x Solid State Relay Type	<b>Digital Output Voltage</b> Maximum 30V DC
<b>Digital Output Current</b> Maximum 500 mA for each channel	<b>Operating Temperature</b> 0 ~ 60 °C	<b>Input Voltage</b> 0-30V DC
<b>Input Resistance</b> 110 KOhm	<b>Input Resolution</b> 12 Bit	<b>Mount Type</b> EPC Panel PC İçerisine Entegre
<b>Isolation</b> 1,5KV Isolation on each digital output 1,5KV Isolation on RS232 interface		

EPC-AIOT-AD8R8 I/O module is designed for EPC Series Panel PCs as an integrated solution to support different I/O port requirements in Digital Transformation and Industry 4.0 applications.

EPC-AIOT-AD8R8 I/O module, which can integrate the Digital and Analog I/O as well as programmable Relay features that can normally be used with external I/O modules in a standard Panel PC. Thus EPC Series Panel PCs offer the advantage of easy integration and fast deployments in your Industry 4.0 and Automation projects.

The EPC Series Panel PCs' standard I/O port structure changes with an integrated AIOT-AD8R8 I/O module. Get detailed information about this from your sales representative.

### AIOT-AD8R8 I/O Module

